

# This presentation premiered at WaterSmart Innovations

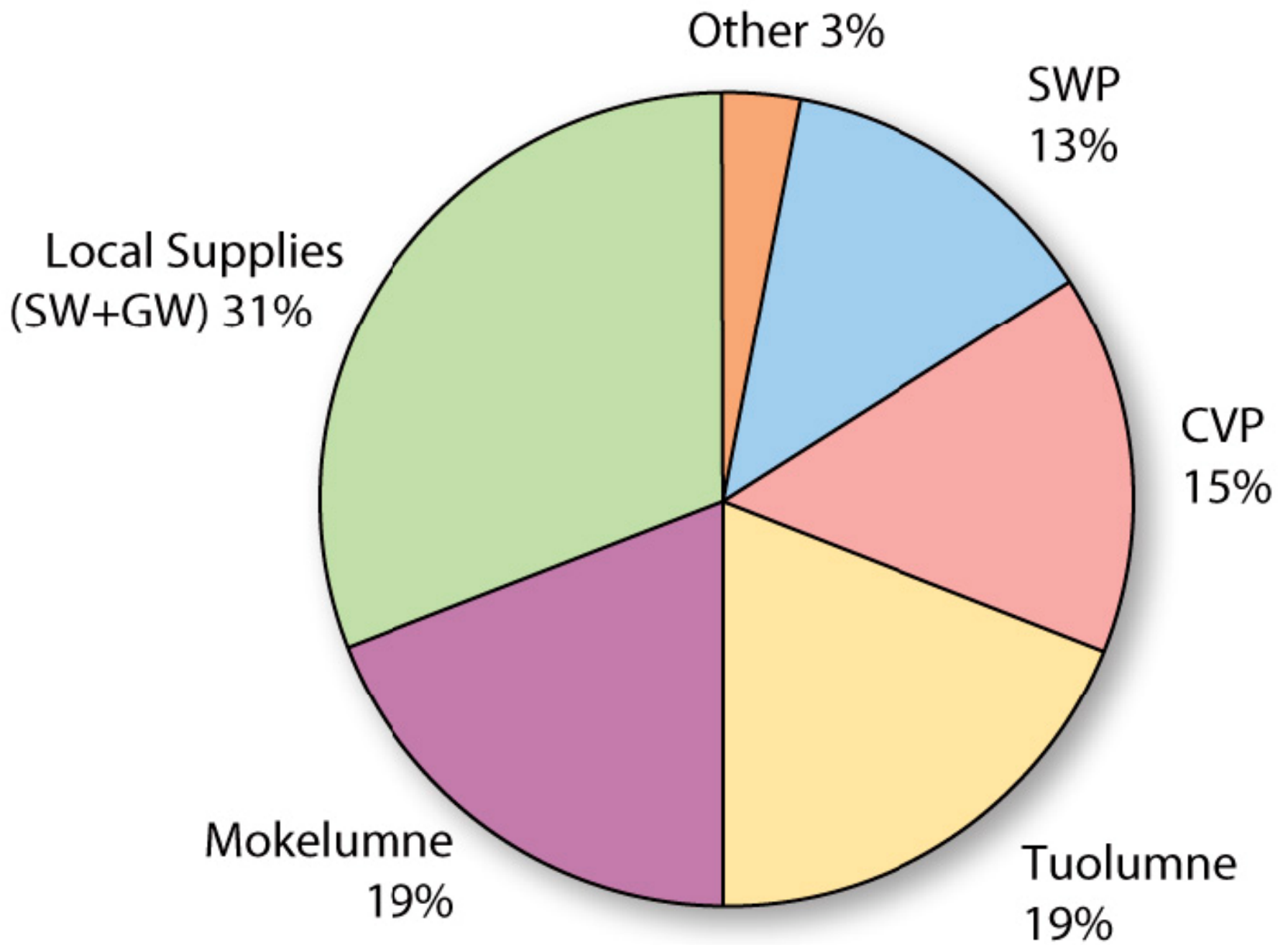
[watersmartinnovations.com](http://watersmartinnovations.com)





# **Regional Movement: Inter-agency Collaborations in the Bay Area**

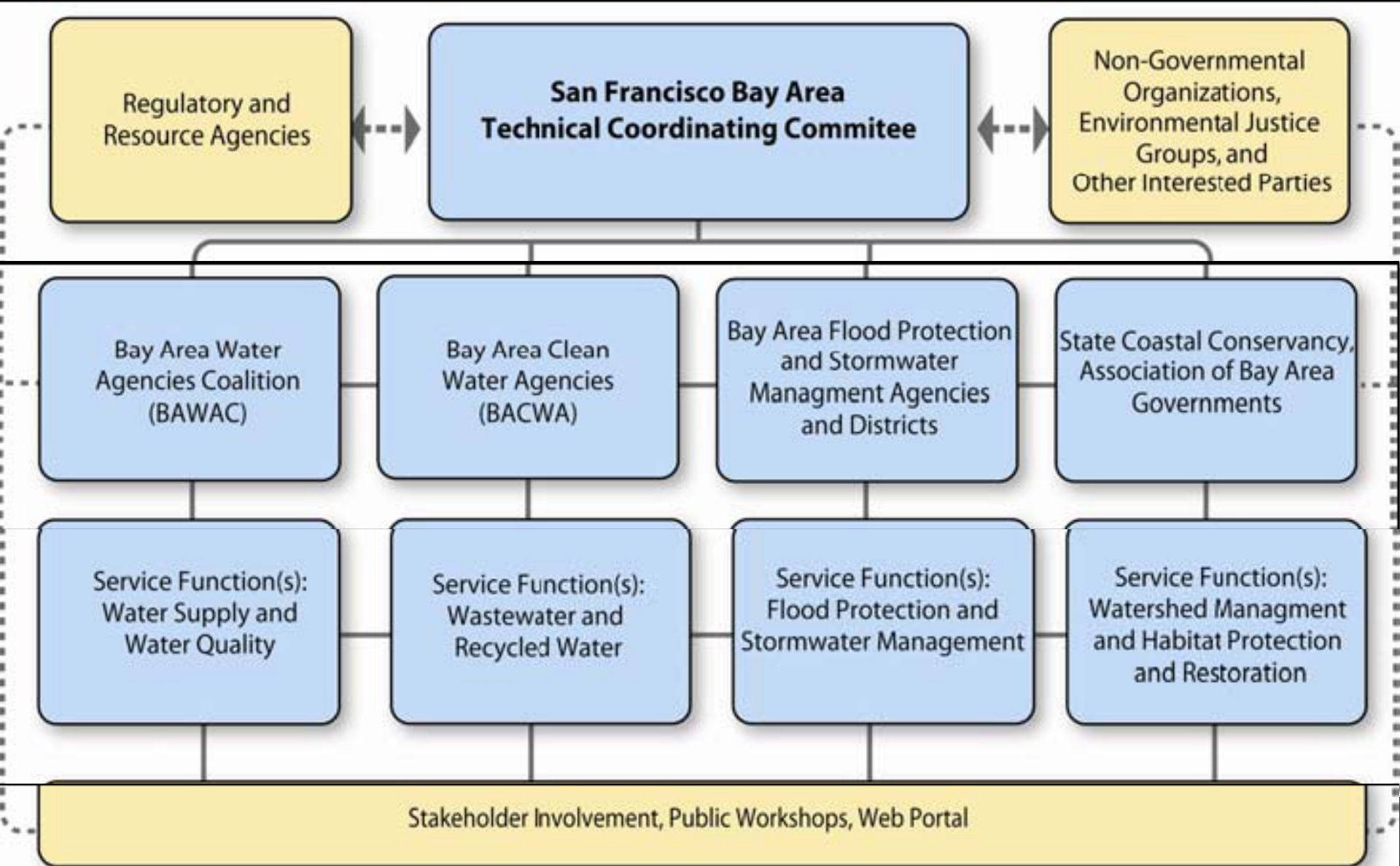
**Dan Carney**  
**Water Conservation Manager**  
**Marin Municipal Water District**  
**[dcarney@marinwater.org](mailto:dcarney@marinwater.org)**  
**415.945-1522**



**Describe the “typical” political decision-making process using a phrase similar to.....**

**"act naturally,"  
"original copy,"  
"found missing,"  
"definite possibility,"  
"terribly pleased,"**

**Political Action**



**LEGEND**

- LOMU Signatories
- Stakeholders

# Inter-agency Project Goals

- **Enhance and protect Watersheds**
- **Create synergistic opportunities**
- **Encourage positive social behavior and transform the marketplace**

# Collaborative Projects

**Public Outreach**

**Training**

**Funding**

**Program Implementation**


**Technical Analysis**

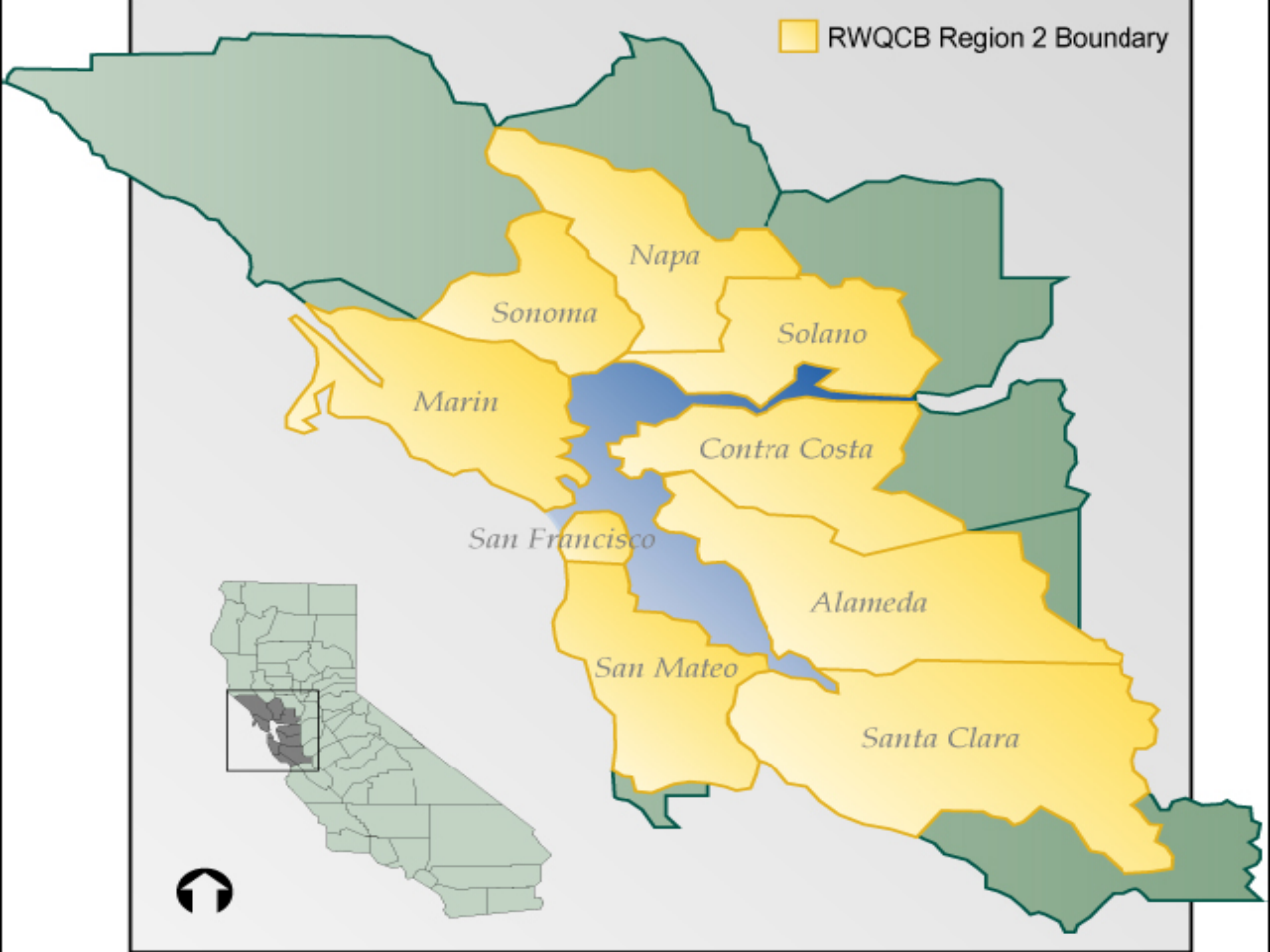


# San Francisco Bay Area





 RWQCB Region 2 Boundary



# North Bay Watershed Association



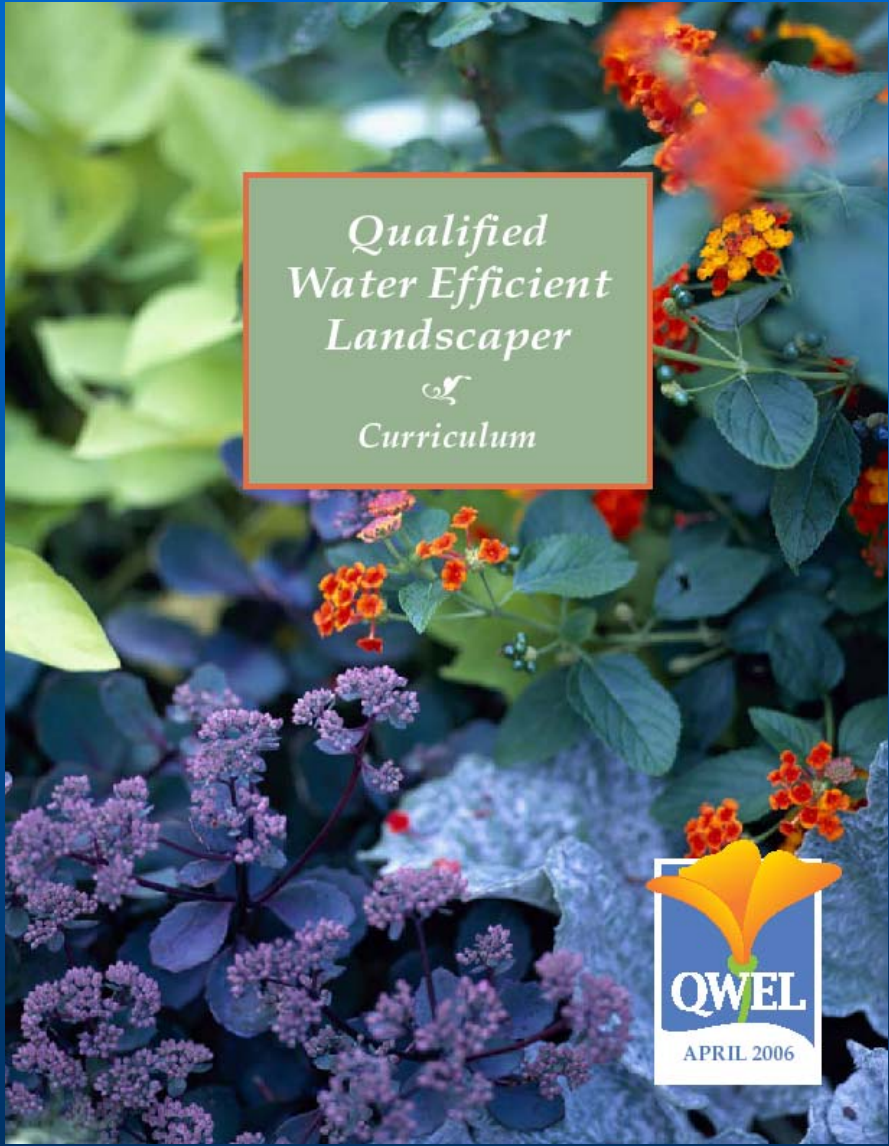
# BAWWSCA

Bay Area Water Supply & Conservation Agency









[www.qweltraining.com](http://www.qweltraining.com)



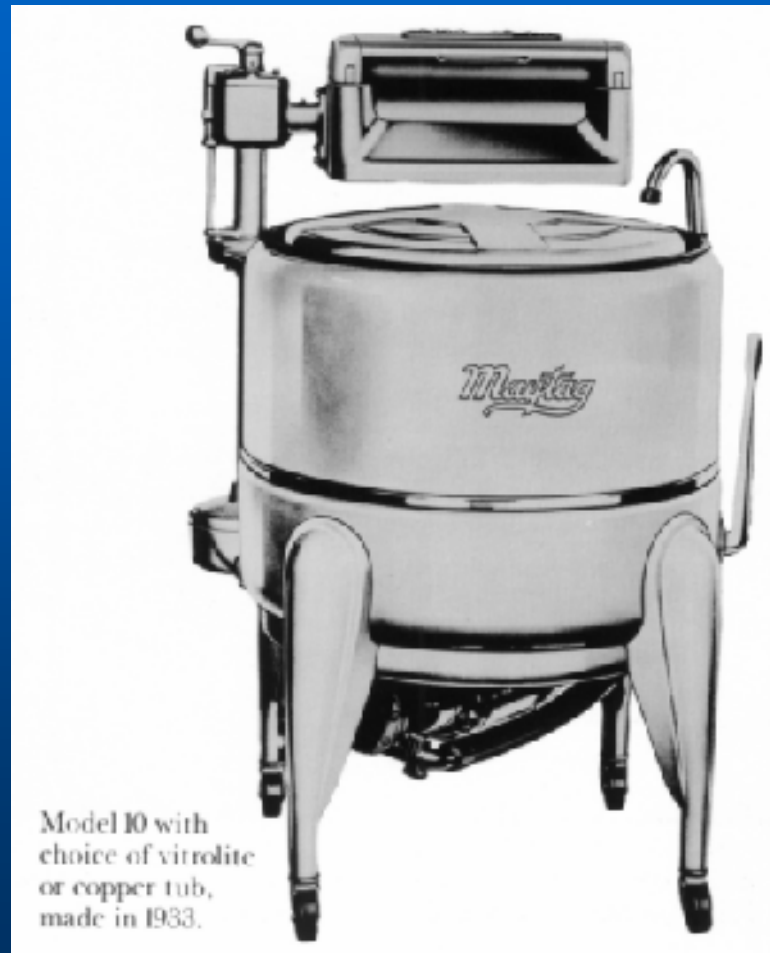


# High Efficiency Washers

Save Water.

Save Energy.

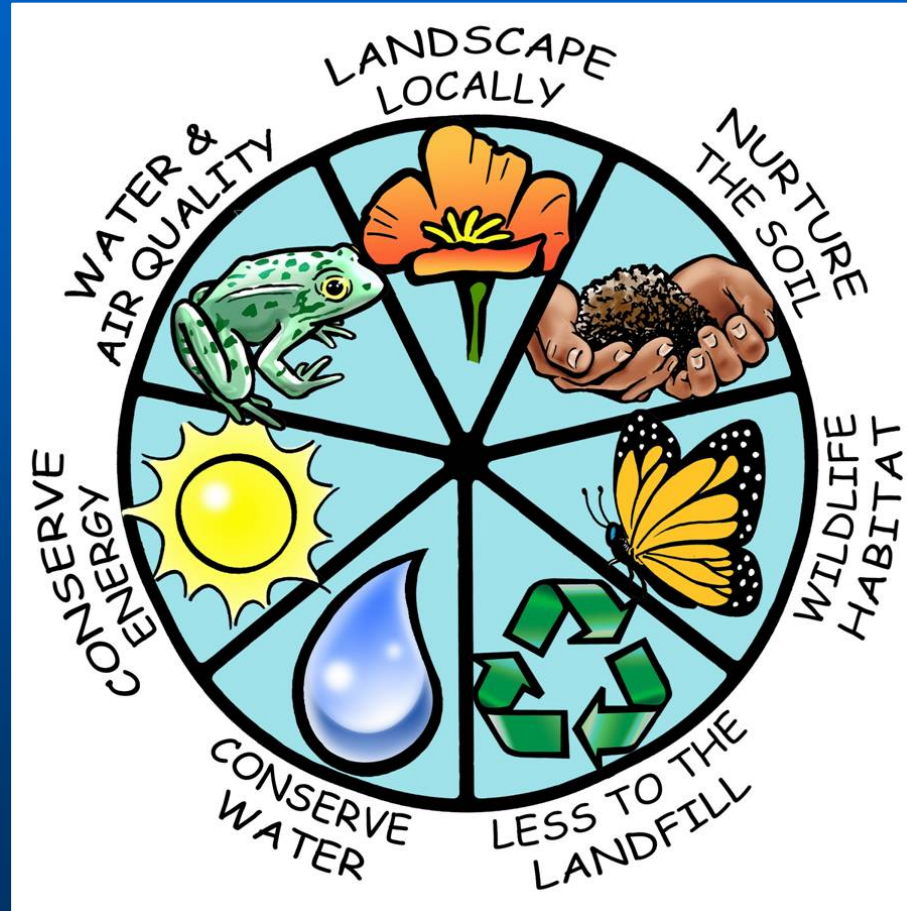
Save Money.



Model 10 with  
choice of vitrolite  
or copper tub,  
made in 1933.



## Bay-Friendly Regional Coalition

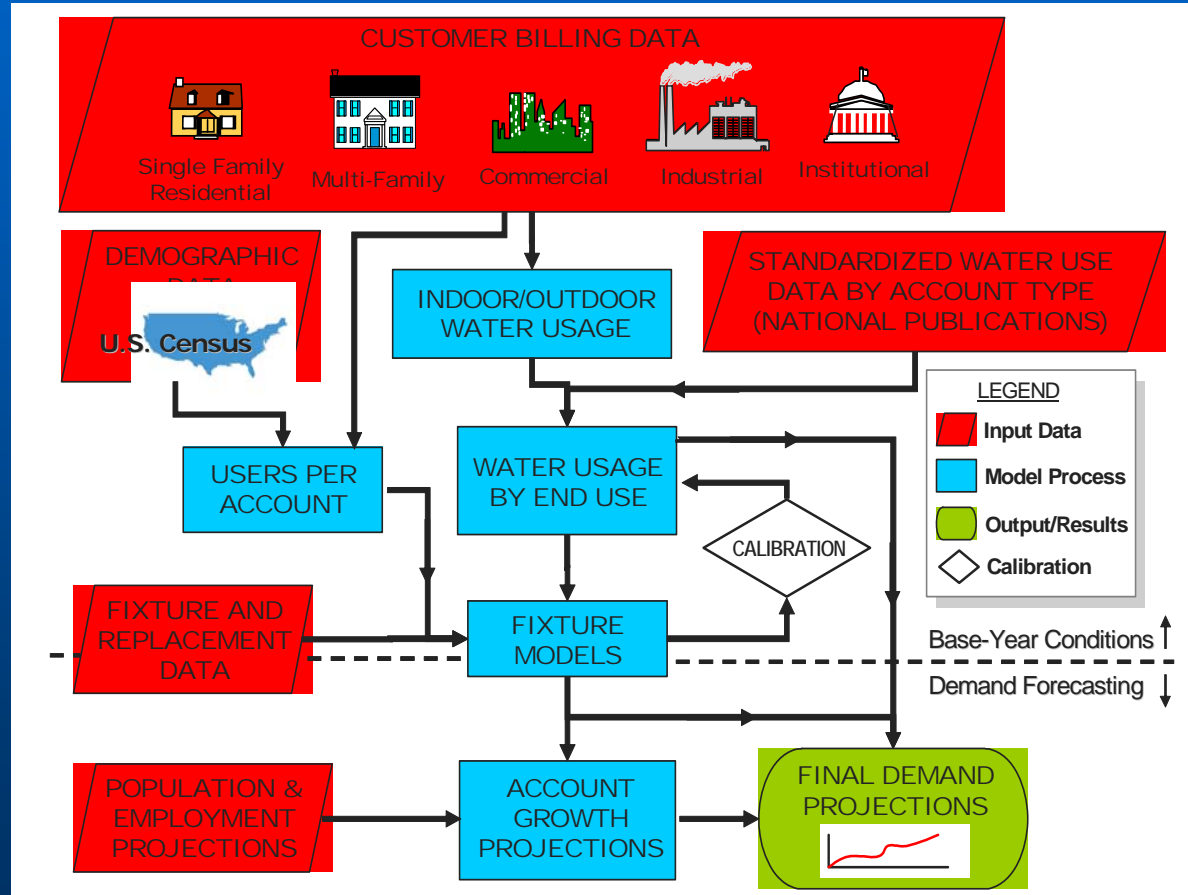


[www.stopwaste.org](http://www.stopwaste.org)

A vibrant garden scene featuring a path that winds through a variety of plants. In the foreground, there are numerous purple flowers, possibly petunias, and some yellow flowers. The background is filled with dense green foliage and trees, creating a sense of a well-maintained garden. The overall atmosphere is bright and natural.

# Bay-Friendly *Garden Walk*

## Maddaus Water Management DSS Model Overview



# Long Term Conservation Program Savings

